

4MANN[®]

ALUMINIUM COMPOSITE PANEL



PREMIUM SERIES

ABOUT US

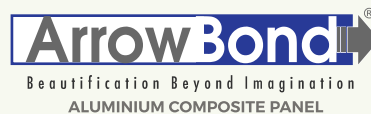
4MANN Industries Pvt. Ltd. is a trusted name in the Indian facade and interior industry, offering premium Aluminium Composite Panels (ACP) and Aluminium High-Pressure Laminates (AHPL) under the brands 4MANN and ARROWBOND.

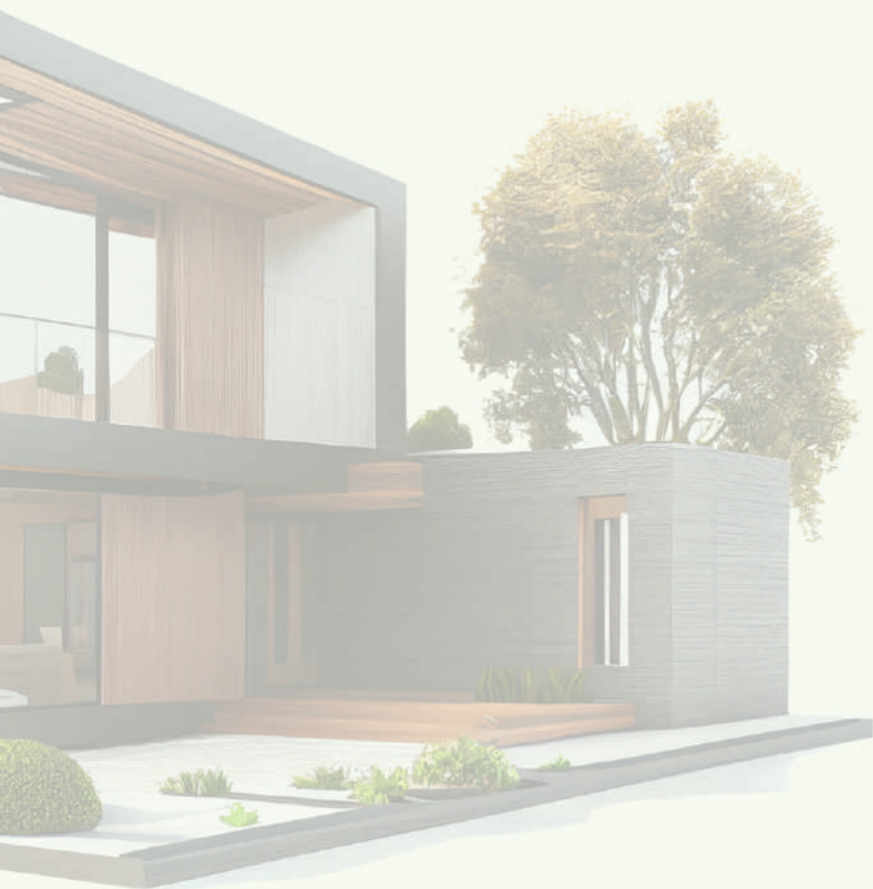
Established in 2002, we bring over two decades of experience, driven by innovation, quality, and sustainability. Our ISO 9001:2015 certified facility in Jammu spans 25,000 sq. m, with an annual capacity of 2.4 million sq. m, having delivered over 50+ million sq. m to date across India.

With a team of 300+ professionals and a network of 2,000+ channel partners, we provide a versatile product range ideal for modern facades, interiors, signage, and infrastructure applications.

As a proud member of IGBC, we promote eco-conscious manufacturing and deliver recyclable, energy-efficient panels that meet the highest industry standards. Our in-house technical team ensures seamless support from concept to completion.

At 4MANN, we're not just building surfaces—we're transforming spaces, one panel at a time.





4MANN GROUP
EXCELLENCE... ALWAYS



Upgrade to Smarter Cladding with 4MANN AHPL

Step into the future of architectural design by switching from traditional HPL boards to 4MANN AHPL which is an intelligent, eco-friendly, and high-performance cladding solution crafted for modern interiors and exteriors.

• Engineered for All Environments

4MANN AHPL is designed to endure diverse weather conditions, making it ideal for both indoor and outdoor applications such as cladding, canopies, railings, fencing, doors, and more. Its superior weather resistance ensures longevity even in the harshest climates—be it scorching sun, heavy rains, or freezing cold.

• Smarter Than Standard HPL

Beyond the standard benefits of traditional HPL, 4MANN AHPL overcomes common challenges—offering a technically superior and hassle-free cladding alternative. It resists cracking, delamination, and warping—ensuring peace of mind for architects, fabricators, and end users.

• Cost-Effective Without Compromise

Crafted from high-grade virgin raw materials, 4MANN AHPL is highly flexible and formable. Best of all, it's 30–50% more cost-efficient than conventional HPL without compromising on performance.

• Safety You Can Rely On

4MANN AHPL offers high thermal resistance, making it ideal for applications exposed to heat and varying temperatures. If required, it is also available in specialized fire-retardant grades that further enhance safety for critical environments.

• Low Maintenance, Long-Term Value

Thanks to its durable surface and weather-resistant composition, AHPL panels require minimal upkeep over the years. Simple cleaning is all it takes to maintain its original look, reducing long-term maintenance costs significantly.

• Built to Last

Every AHPL panel comes with a 10-year warranty, underscoring 4MANN's promise of long-term quality, dependability, and customer trust.

APPLICATION

- | | | |
|--------------------|------------------|-----------|
| • Outdoor Cladding | • Ceiling | • Louvers |
| • Wall Cladding | • Railing | • Fences |
| • Attic Cladding | • Gate Elevation | • Rafters |
| • Balcony Cladding | • Canopy | • Pergola |

FEATURES



Fully
Recyclable



Borer & Fungi
Resistant



Termite
Proof



LEED
Certified



No Swelling/
Shrinkage



Luxurious
Finish



Fire
Retardant



Easy to
Install



Zero
Fumes

SAND SERIES

AHPL | ACP

ALUMINIUM ALLOY

3105



MA-576 | Brook Stone

6RSDHP | 4SD | 3SD



MA-577 | Grey Whales

6RSDHP | 4SD | 3SD



MA-578 | Burnt Orange

6RSDHP | 4SD | 3SD



MA-579 | Night Rock

6RSDHP | 4SD | 3SD



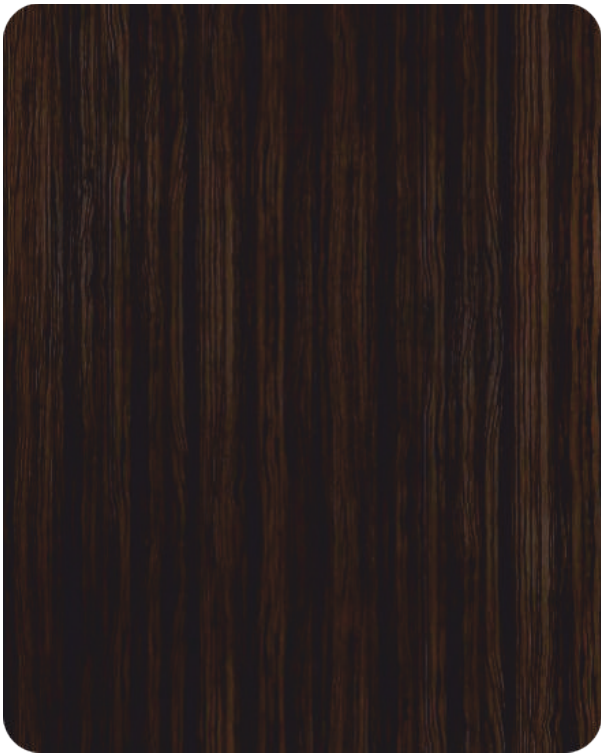


WOODEN SERIES

AHPL | ACP

ALUMINIUM ALLOY

3105



MA-351 | Rose Wood

6FWHP | 6RWHP | 6FW | 4PW | 3RW



MA-354 | Ebony

6FWHP | 6RWHP | 6FW | 4PW | 3RW



MA-362 | Palisandro Brown

6FWHP | 6RWHP | 6FW | 4PW | 3RW



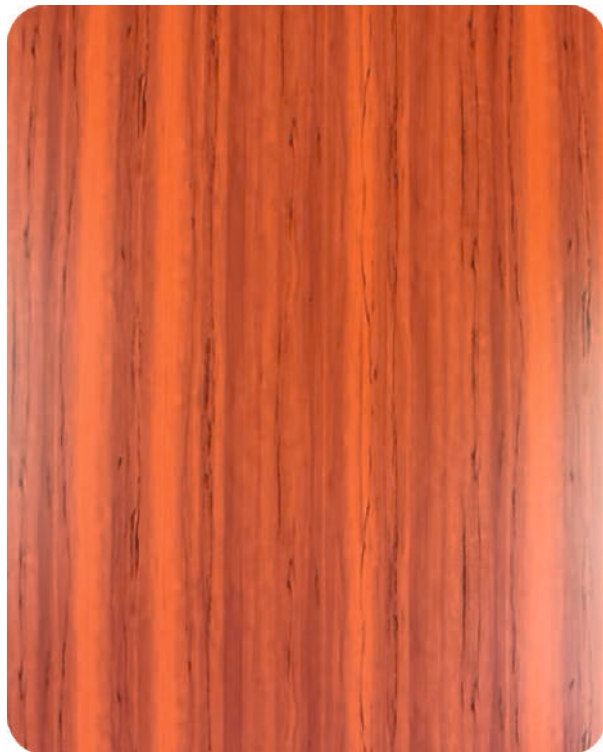


WOODEN SERIES

AHPL | ACP

ALUMINIUM ALLOY

3105



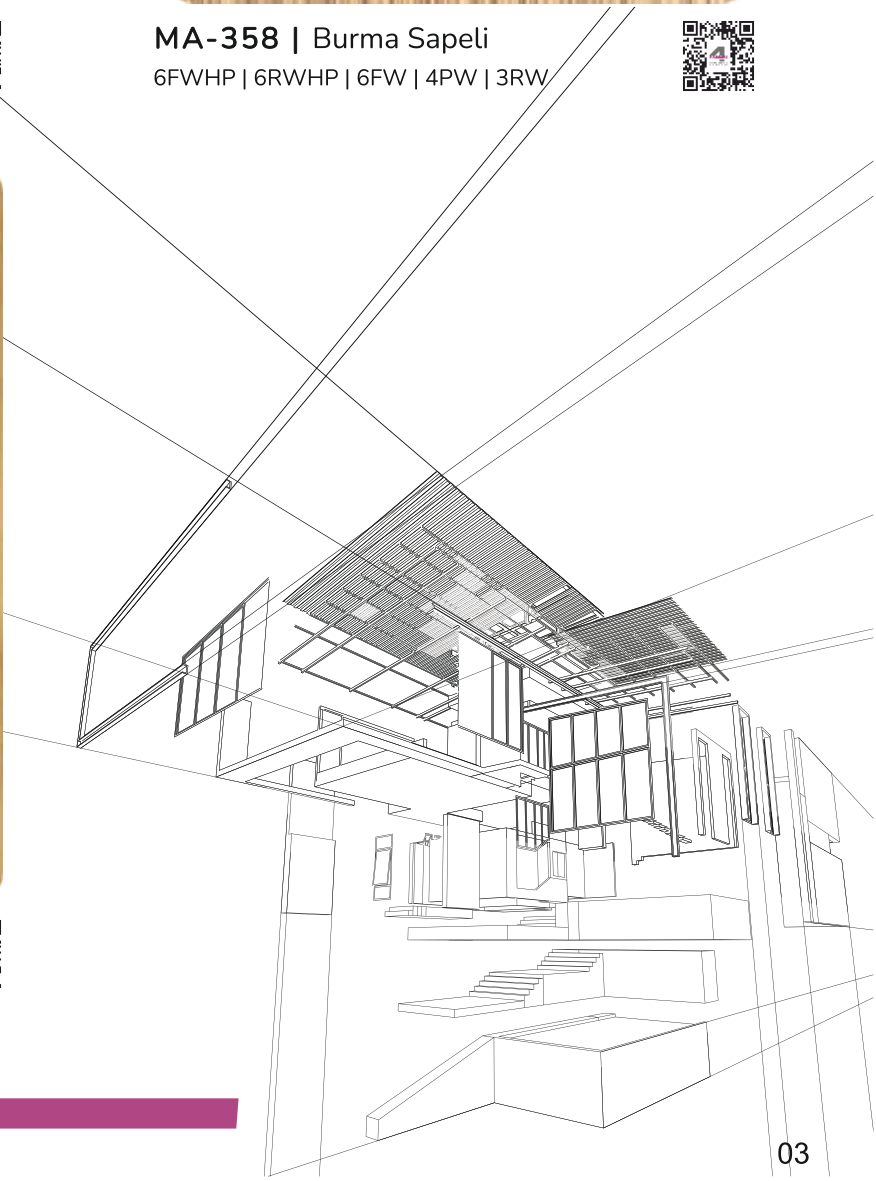
MA-360 | Cherry
6RWHP | 4PW | 3RW



MA-358 | Burma Sapeli
6FWHP | 6RWHP | 6FW | 4PW | 3RW



MA-359 | Burn Walnut
6RWHP | 4PW | 3RW





WOODEN SERIES

AHPL | ACP

ALUMINIUM ALLOY
3105



MA-356 | Smoked Walnut
6RWHP | 4PW | 3RW



MA-355 | Tinyo
6FWHP | 6RWHP | 6FW | 4PW | 3RW



MA-363 | California Walnut
6RWHP | 4PW | 3RW





WOODEN SERIES

AHPL | ACP

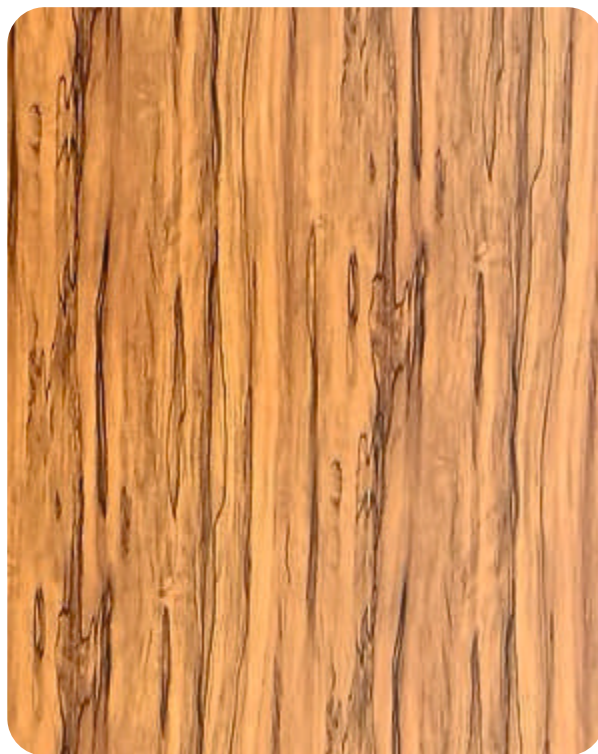
ALUMINIUM ALLOY

3105



MA-365 | Smoked Berlinia

6RWHP | 4PW | 3RW



MA-366 | Colonial Wood

6RWHP | 4PW | 3RW



MA-367 | Tuscan Walnut

6RWHP | 4PW | 3RW



MA-387 | Novoceno Pine

6RWHP | 4PW | 3RW





WOODEN SERIES

AHPL | ACP

ALUMINIUM ALLOY

3105



MA-378 | Timber Light
6RWHP | 4PW | 3RW



MA-372 | Burma Teak
6RWHP | 4PW | 3RW



MA-379 | Aeon Walnut
6RWHP | 4PW | 3RW





STONE SERIES

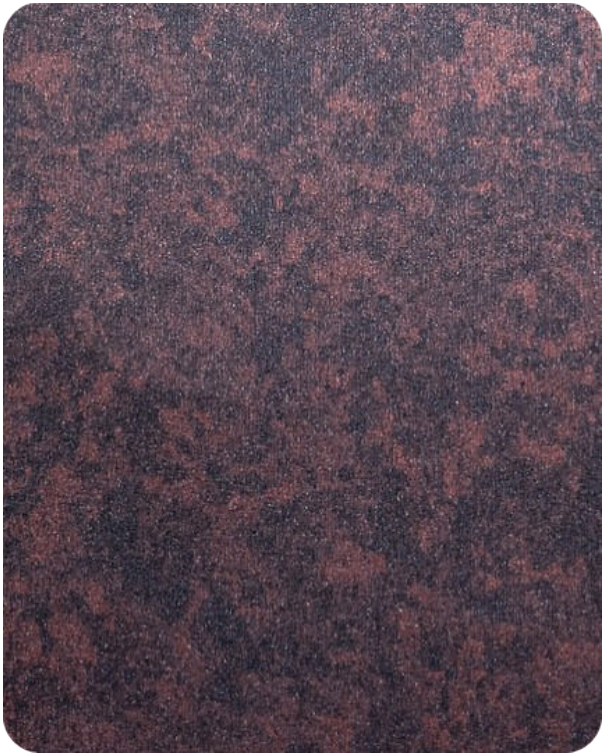
AHPL | ACP

ALUMINIUM ALLOY

3105



MA-451 | Regal Black
6RSTHP | 4PST | 3RST



MA-454 | Bare Graphite
6RSTHP | 4PST | 3RST



MA-456 | Titlis Grey
6RSTHP | 4PST | 3RST





STONE SERIES

AHPL | ACP

ALUMINIUM ALLOY

3105



MA-457 | Aspen Grey

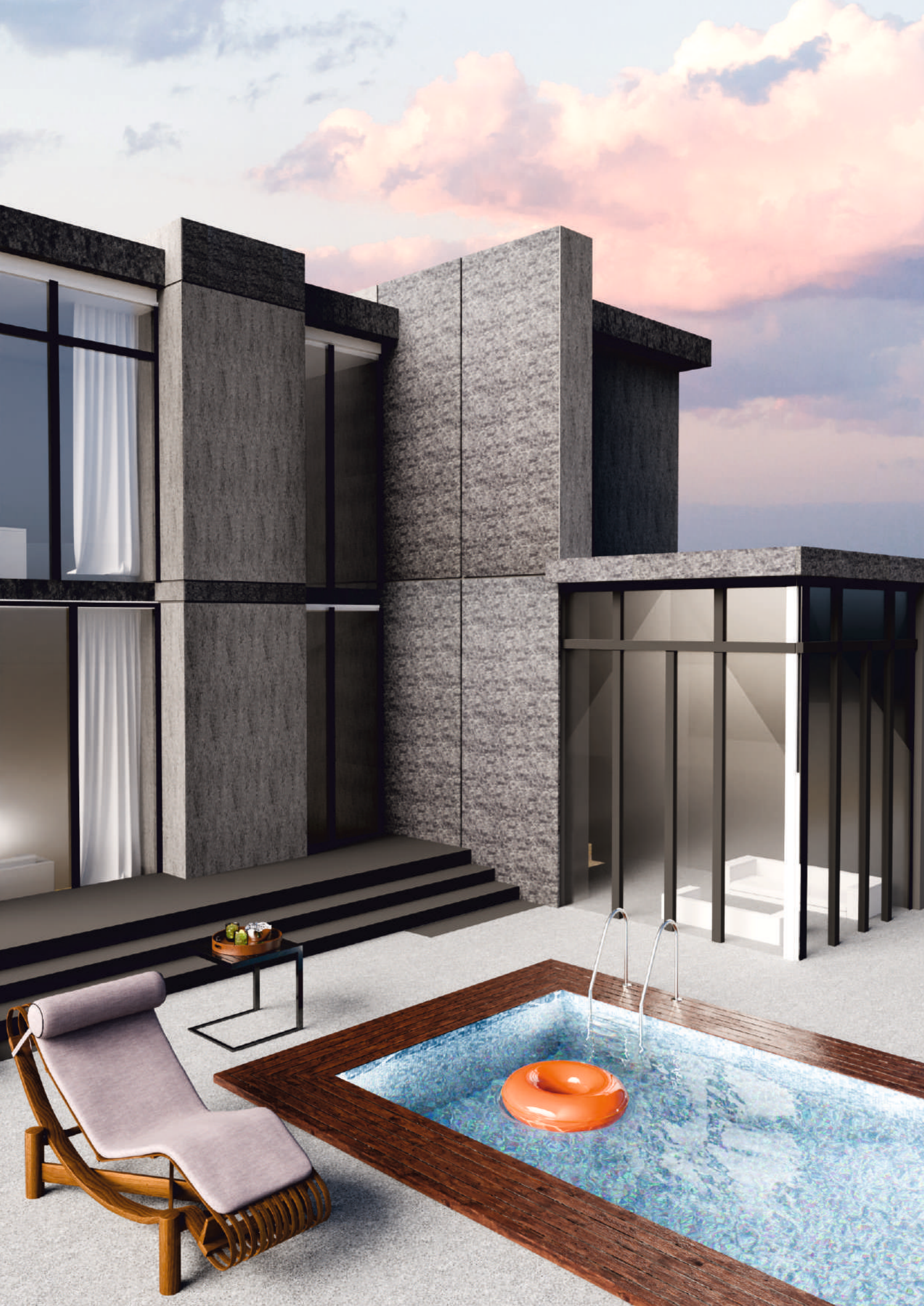
6RSTHP | 4PST | 3RST



MA-455 | Raw Graphite

6RSTHP | 4PST | 3RST





MARBLE SERIES

AHPL | ACP

ALUMINIUM ALLOY

3105



MA-203 | Emperador Dark
6RMBHP | 4MB | 3MB

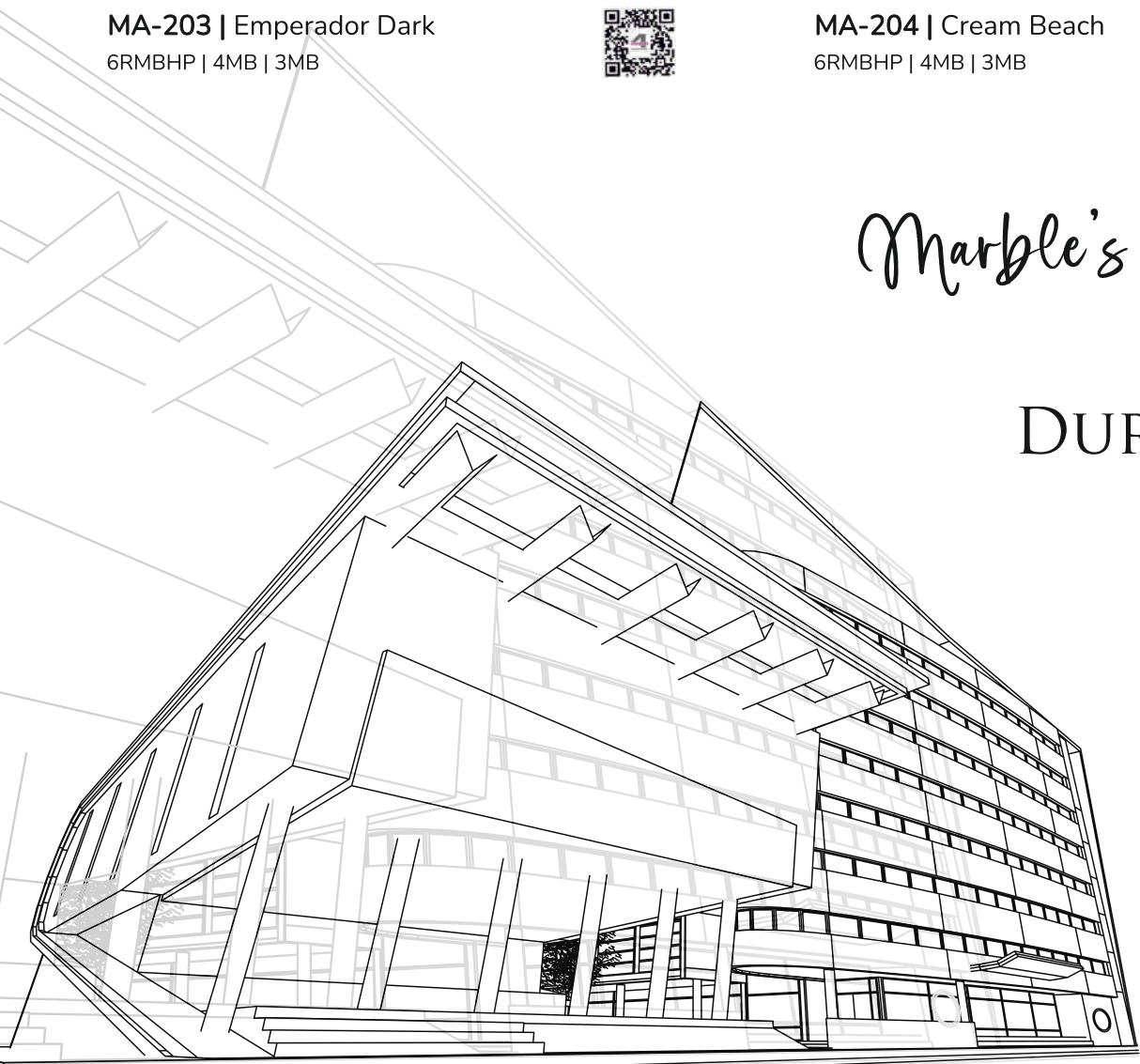


MA-204 | Cream Beach
6RMBHP | 4MB | 3MB



Marble's Grandeur

ACP's
DURABILITY



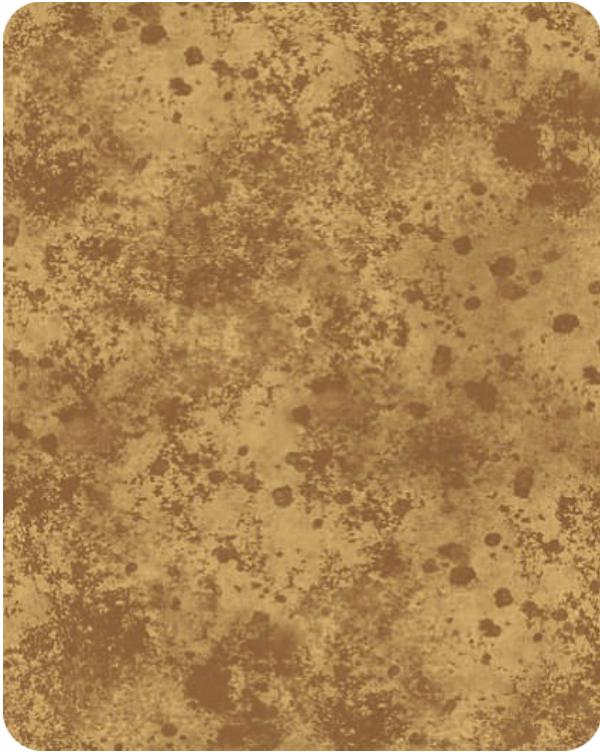


METALLIC FLAIR

AHPL | ACP

ALUMINIUM ALLOY

3105



MA-651 | Cosmic Chill

6RFLHP | 4PFL | 3RFL



MA-652 | Corten Steel

6RFLHP | 4PFL | 3RFL

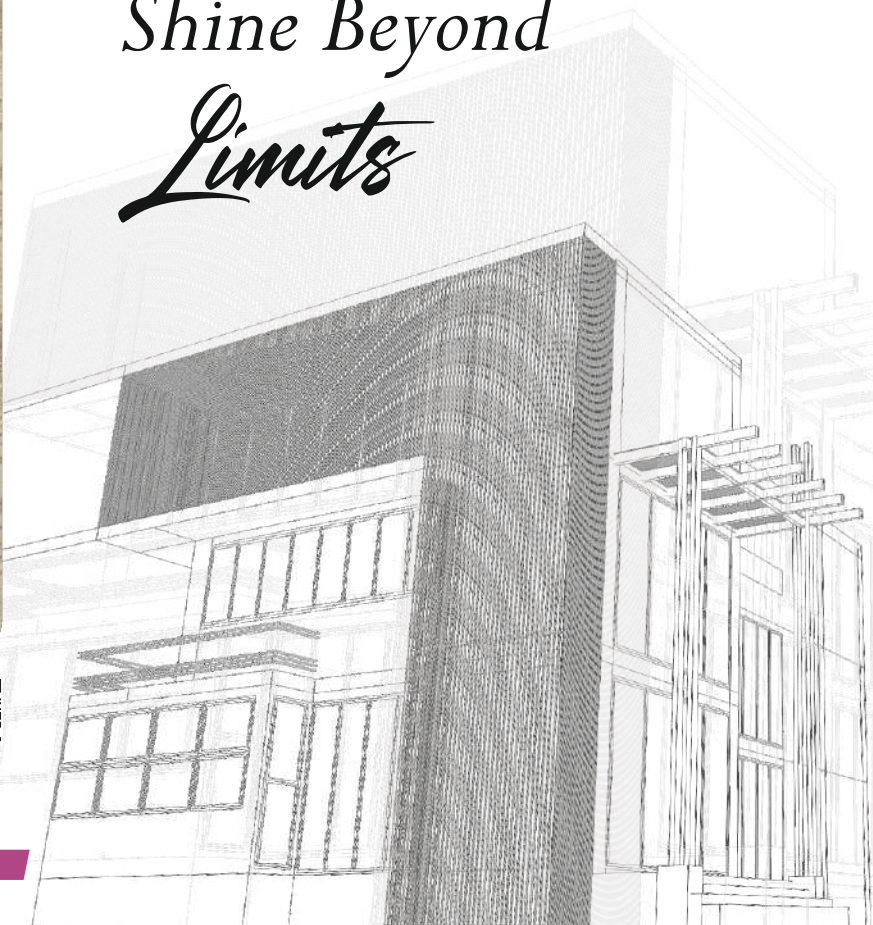


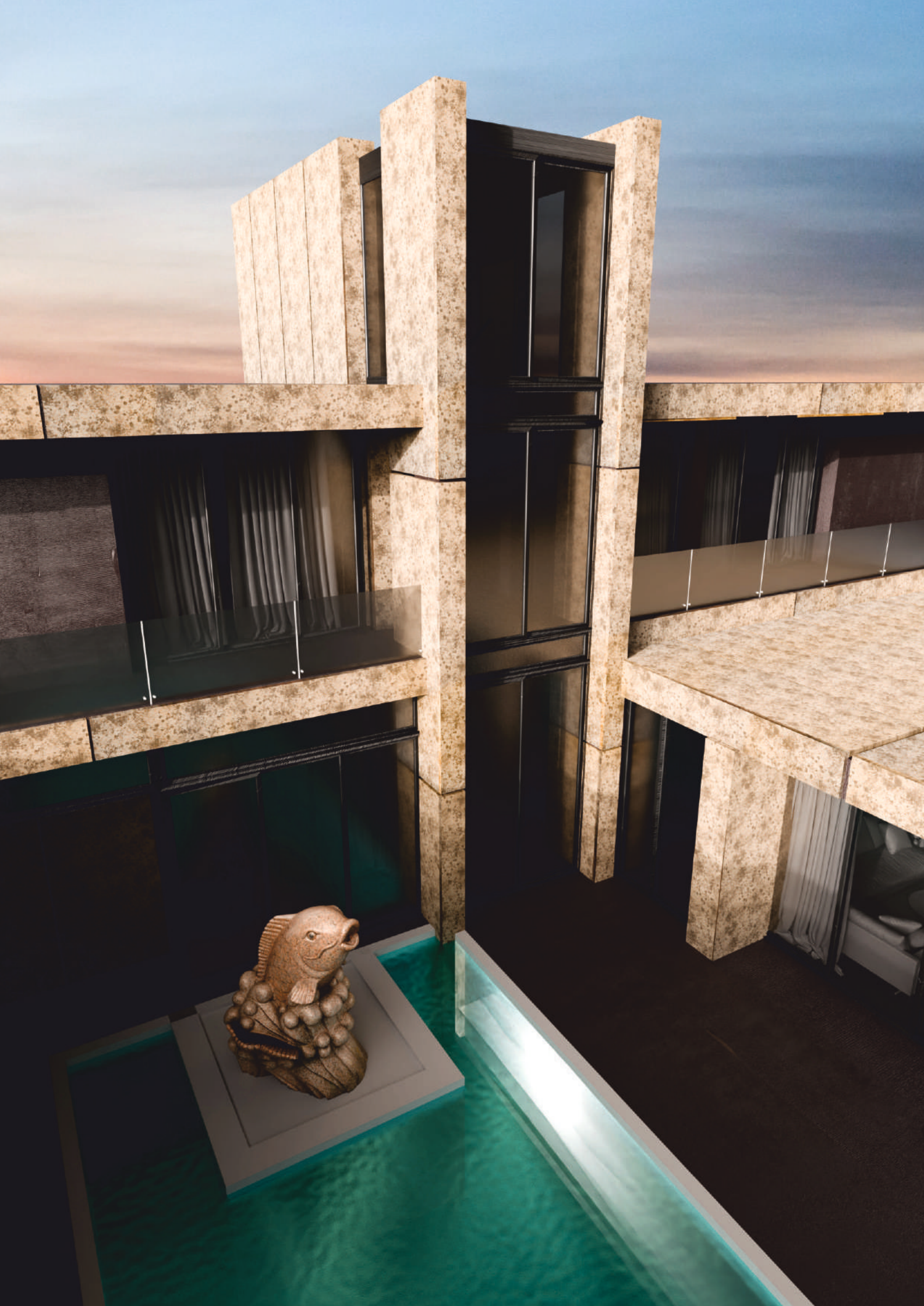
MA-653 | Gris Desire

6RFLHP | 4PFL | 3RFL



*Shine Beyond
Limits*





Fire Retardant

4MANN[®] FR is composed of fire resistant mineral filled core sandwiched between two skins of selected thickness of architectural aluminium skin of engineered alloy with PVDF lacquered surface on front and service coated on rear.

4MANN[®] FR panels can be processed and fabricated as any other **4MANN**[®] ACP's that are very tough, weatherproof and above all, do not actively contribute to combustion in fire.

APPLICATION :

Residential buildings, public utility buildings, museums, theater buildings, art galleries, corporate headquarter and offices, malls and supermarkets, car show rooms, fuel filling stations etc.

FIRE BEHAVIOUR	STANDARD	CRITERIA
European Union Acceptance	EN 13501-1	Class B - S1, d0
Flamming Droplets	EN 11925-(do)	Flaming droplets - None
Fire Growth rate	EN 13823-(S1)	FIGRA \leq 120 W/s
Total heat release		THR _{600s} \leq 7.5 MJ
Smoke growth rate		SMOGR _A \leq 30m ² /s ²
Lateral flame spread		LFS < edge of specimen
Total smoke produced in first 600sec		TSP _{600s} \leq 50m ²

CERTIFIED BY:

SGS



REGULAR ACP

RAPID FIRE SPREAD

FIRE SPREADS UPWARD DUE TO A COMBUSTIBLE CLADDING

FIRE BREAKS IN & OUT THROUGH GLASS

FLAMES BREAK DOWN
SMOKE BUILD UP

**FIRE BEHAVING
IN A
BUILDING**

4MANN[®] FR ACP

RESTRICTED FIRE SPREAD

FIRE SPREAD RESTRICTED DUE TO A FIRE RETARDANT ACP CLADDING MATERIAL AND SYSTEM

NO DROPLETS FALLING DOWN, HENCE AVOIDING FURTHER SPREAD AND HAZARD TO PEOPLE

NO SMOKE & TOXIC FUMES



AHPL

PRODUCT GRADE			TOTAL AHPL THICKNESS	FRONT SKIN THICKNESS	LDPE CORE THICKNESS	BACK SKIN THICKNESS	FRONT SKIN COATING THICKNESS	BACK SKIN COATING THICKNESS
PLATINUM	6FWHP	6FW	6 MM	0.50 MM	5.00 MM	0.50 MM	25 $\mu\pm 3$	7 $\mu\pm 1$
RUBY	6RWHP	6RSDHP	6 MM	0.25 MM	5.50 MM	0.25 MM	25 $\mu\pm 3$	7 $\mu\pm 1$
	6RSTHP	6RMBHP						
	6RFLHP							

ACP

PRODUCT GRADE			TOTAL ACP THICKNESS	FRONT SKIN THICKNESS	LDPE CORE THICKNESS	BACK SKIN THICKNESS	FRONT SKIN COATING THICKNESS	BACK SKIN COATING THICKNESS
PLATINUM	4FW	4F	4 MM	0.50 MM	3.00 MM	0.50 MM	25 $\mu\pm 3$	7 $\mu\pm 1$
	4FR							
PEARL	4PW	4PST	4 MM	0.25 MM	3.50 MM	0.25 MM	25 $\mu\pm 3$	7 $\mu\pm 1$
	4PFL	4MB						
	4SD	4PHG						
	4PSP	4P						
	4PC	4PFR						
RUBY	3RW	3RST	3 MM	0.25 MM	2.50 MM	0.25 MM	25 $\mu\pm 3$	7 $\mu\pm 1$
	3RFL	3MB						
	3SD	3RHG						
	3RSP	3R						
	3CR	3RFR						

STANDARD SIZES

• 1220MM X 2440MM • 1220MM X 3050MM • 1220MM X 3660MM

Customized sizes as per requirement can be provided upto width 1550MM.

PRODUCT TOLERANCE

Width: ± 2 MM • Length: ± 4.0 MM • Panel Thickness: ± 0.2 MM

NOTE:-

- The shown colors are for reference only. Also batch wise colors may differ. Hence, kindly request for actual samples.
- **4MANN**® reserves the right to make any changes without prior notice.
- For further information on the samples, technical details and other relevant information, kindly contact to us or our business partner in your region.

4MANN® ALUMINIUM COMPOSITE PANEL

CERTIFICATIONS



4MANN INDUSTRIES PVT. LTD.

HEAD OFFICE

404 / 405, Ashok Premises,
Old Nagardas Cross Road, Mogra Village,
Opp. Saraswati Towers, Andheri East,
Mumbai - 400 069.
Board Line: +91-22-6901 4000

ACP FACTORY

EPIP, Kartholi,
Bari Brahmana,
Jammu - 181 133.
Email: factory@4mannacp.com

IOP FACTORY

Plot No. 18/28, Hargarh Industrial Area,
Village - Hargarh, Tehsil - Sihora,
Dist - Jabalpur, MP - 483 225
Email: sales@4mannispac.com

DEPOT

AHMEDABAD | BENGALURU | BHIWANDI | DELHI | SURAT | PUNE

Presenet PAN INDIA through Distributors, Dealers and Marketing Team.



Tel : +91 22-6901 4011 / 4012 Mob : +91 8097400448
Email: sales@4mannacp.com • Website: www.4manngroup.com
Follow us on [f](#) [i](#) [x](#) [in](#) [yt](#)



CIN NO U27203MH2004PTC147987

VOL-5.0.0 MAY -25